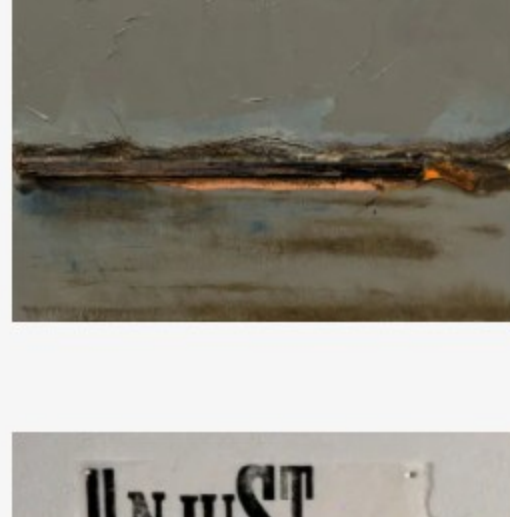
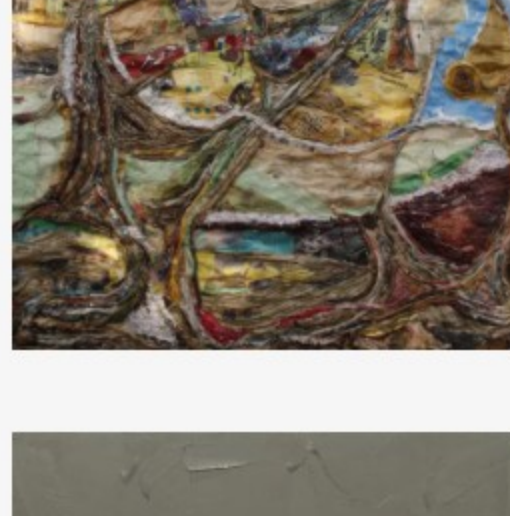
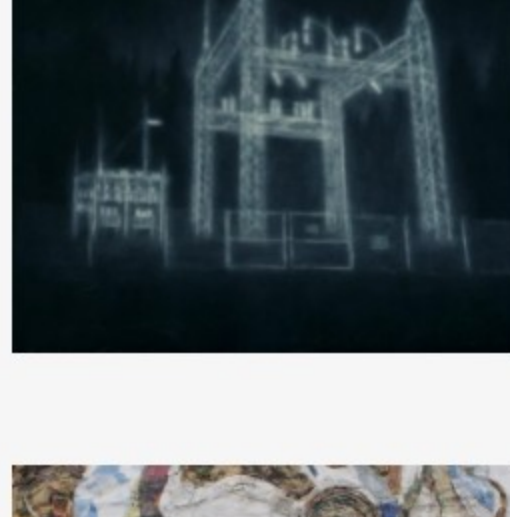
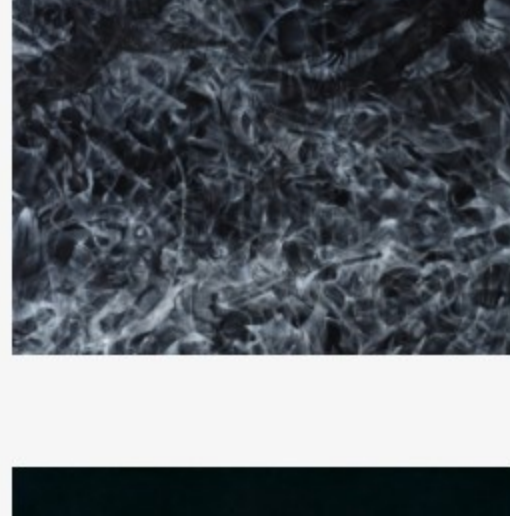
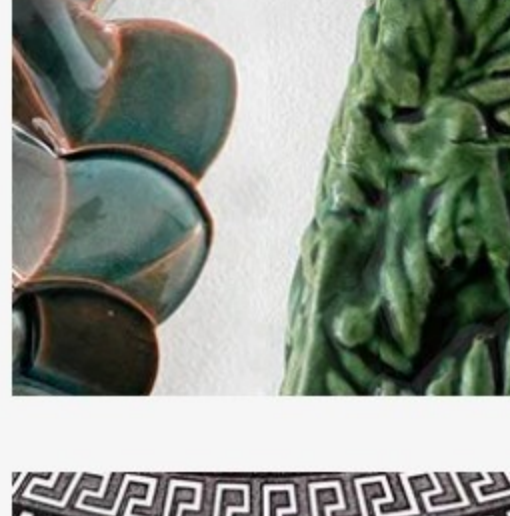
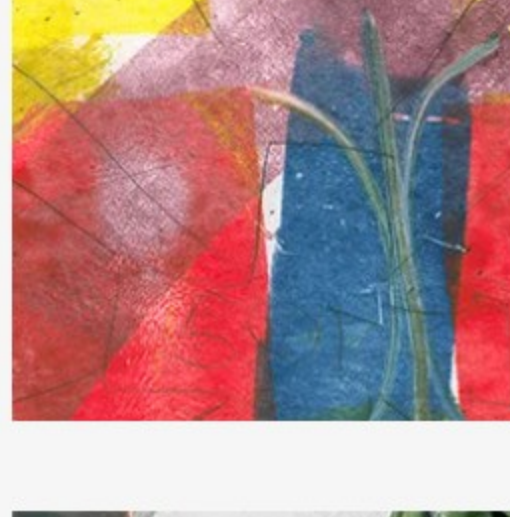
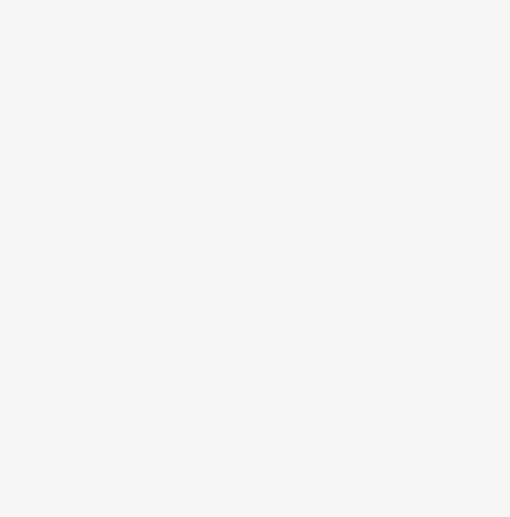
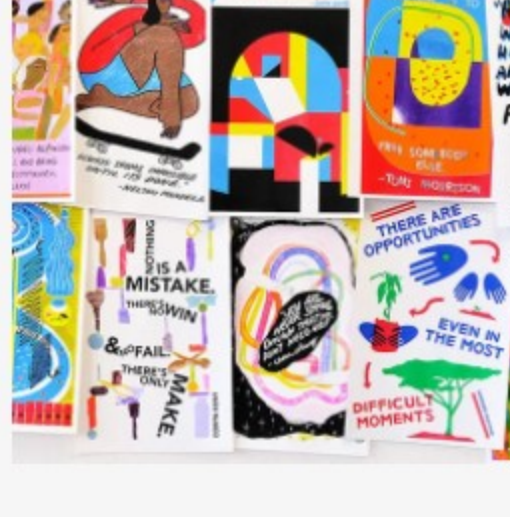
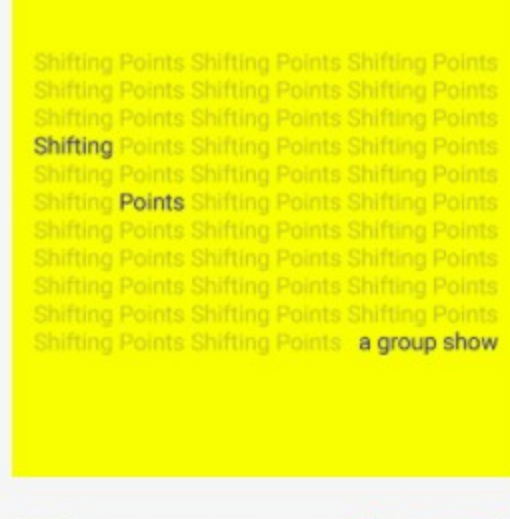
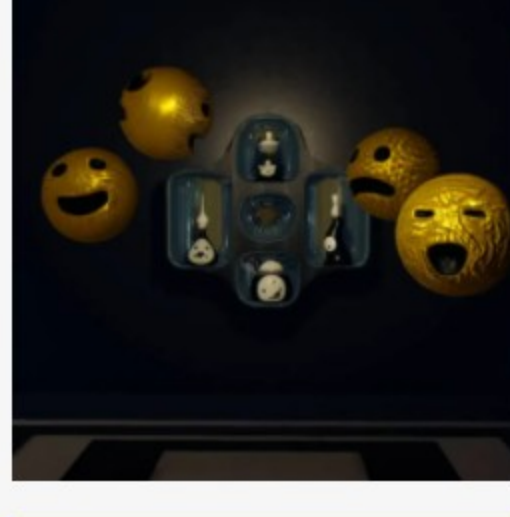


Past Exhibitions



In Between
Group Exhibition
October 8 – December 20 2019

This exhibition will feature the work of six artists, all of whom employ various strategies to consider what it means to live in international, mixed communities and how their roots inspire, influence and inform their work. Participating artists: Tara Sabharwal, Barbara Beisinghoff, Alicia Henry, Eloise Plamondon, Golan Andill, and Ann Marie Lavigne.

Veronica Graham
Diatribes
October 12, 2019

Diatribes is an evolving project that centers on a virtual reality haunted house. Inside players are taken on a narrated journey through an arena room where Nature and Civilization are locked in an endless battle. WSW hosted a playtest, or an early demo of the experience meant to provide the creator with feedback before an official release.

Shifting Points
Fall 2019 Intern Show
September 10 – 20, 2019

Together the artists delve into the concept of time: as a flashback, a texture for memory, an object of displacement and longing, a tool of inquiry, and a state of ambiguity and collapse. Through a vast array of media – printmaking, photo transfers, and sculpture – the artists show time as a conceptual tool deeply connected to the physical experience of creating.

Class Set Vol. 1 and 2
Commissioned by Jessalyn Aaland
July 8 – September 2, 2019

Class Sets Volume 1 and 2 are print portfolios commissioned and curated by artist and educator Jessalyn Aaland. Spurred by a desire to provide free art to public school teachers to serve as both decoration and a pedagogical tool, Aaland asked ten Bay Area artists to create posters based on inspirational quotes. Over 7,900 of the resulting risograph-printed posters have been distributed to classrooms so far.

Sanctuary
Printmaker's Open Forum: Exchange Portfolio 2019
July 8 – September 2, 2019

From PMOF Director and Curator Shelley Thorstensen: "Traditional printmaking today retains the zip of the freeze-dried moment, artifice on supple yet fragile paper – the juxtaposition of labor (on a plate, on a stone) with the (almost) instantaneous nature and feel of the printed surface. With the inclusion of newer digital habitation within the output of intaglio, lithograph and silkscreen, printmaking now stands in the cross hairs... It begs question of the artist/printmaker and taunts that one better know what one is doing."

Yoonmi Nam
Arranged Flowers
July 8 – September 2, 2019

The artist describes this series of lithographs like this: "In the arranged flowers imagery, the flowers, once cut from their roots, have only a short remaining time to live....The containers that hold them are disposable objects, such as a yogurt cup, a Styrofoam take out box, and an instant noodle bowl. These objects, although meant to be discarded immediately after use, often last longer than their intended lifespans. I am interested in beauty, irony, impermanence, and the common and extraordinary way we structure our surroundings."

Laura Nova
Activ/ist
May 11 – June 7, 2019

Artist, athlete, and activator Laura Nova generates site-specific action-oriented projects which invite participatory energies of neighbors and strangers alike, particularly within the urban landscapes of older adult and migrant communities. She uses cardio, comedy and cooking to create activ/ist audiences who, in turn, reveal and preserve stories of both people and places. Activ/ist chronicles a series of ambulatory, activist and action-oriented projects based in Manhattan's Lower East Side

Spring Intern Exhibition
Objects May Be Closer Than They Appear
February 12 – March 11, 2019

We were proud to present our Spring 2019 intern exhibition, Objects May Be Closer Than They Appear, by Hannah Berman, Ashleigh Pillay, Julia Schreckengost, Darcy Polys, Laura Casas, and Lena Chin. These emerging artists worked in the studios, assisted artists-in-residence, and helped with educational programs and fundraising events. Working collaboratively and independently, they created a collection of prints, objects, and artwork made during their time in the Hudson Valley.

Bhavna Mehta
My Father's Letter
October 9 – December 7, 2018

Bhavna Mehta works with paper – cutting and embroidering it to tell stories that combine figurative imagery with botanical motifs, text and shadows. Using paper as skin and thread to connect and mend, using cutting and sewing to talk about exposing and hiding, she makes work about relating and remembering. Mehta has exhibited widely in San Diego and Southern California.

2018 Intern Exhibition
Assembled in Place
September 11 – September 28, 2018

We were proud to present our 2018 Intern exhibition, Assembled in Place, by Marisa Malone, Laura Salgarolo, Sarah Gordon, Emma Duffan, and Breana Hendricks. These emerging artists worked in the studios, assisted artists-in-residence, and helped with educational programs and fundraising events. Working collaboratively and independently, they created Assembled in Place – a collection of prints, objects, and artwork made during their time in the Hudson Valley.

The WSW Poster Archive
It's In Your Future
June 12 – September 7, 2018

It's In Your Future: Posters from the WSW Archive showcases printed works illustrating the 44-year history of Women's Studio Workshop. Over four decades, WSW has partnered with individuals and institutions to provide unique workshops, film screenings, and festivals. Organized by WSW's Artistic Director Erin Zona, with studio intern Sarah Gordon and Laura Salgarolo, this exhibition highlights selections from the archived ephemera.

Hands-on Art Program
The Artist as Explorer
April 10 – 27, 2018

Women's Studio Workshop, in collaboration with Kingston City Schools, devotes 12 weeks each year to providing in-depth, day-long workshops to local school students. The spring session brings fourth and eighth grade students to the studios to learn the basic processes of papermaking, intaglio, and silkscreen printing, along with the planning and experimentation needed to produce new artwork.

Lyla Arenfeld and Sarah Heitmeyer
Surrounding Delight
February 13 – March 23, 2018

Surrounding Delight presents two artists' exploration of clay's potential to build contemplative compositions, using the tile's modular nature. Transforming space through ornate patterns and textures, Surrounding Delight addresses the bridges between history and craft, traditional and contemporary clay practices, and installation and object.

Erin Zona, WSW Artistic Director
She Was Right: A Museum of Strange Archaeology
December 12 2017 – January 19, 2018

She Was Right that centers around a stone and sixteen drawings of "historical fiction" that document the stone's passage through time. The stone is depicted in each drawing, beginning with an abstract representation of Earth's explosive creation. The viewer is invited to follow the stone through this fabricated history and to question the authorship of historical record. Through these imagined visual records, She Was Right exposes the artificial value systems imposed on art and historical objects.

Fall Intern Exhibition
ex/changes
November 14 – 28, 2017

We were proud to present our fall Intern exhibition, ex/changes: A show of windows, paper, and products by Serena Hocharoen, Morgan Allen, and El Horsfall. For six months, emerging artists Serena, Morgan, and El worked in the studios, assisted artists-in-residence, and helped with educational programs. Working collaboratively and independently, they created ex/changes—a collection of prints, objects, and artwork made during their time in the Hudson Valley.

Tona Wilson
October 10 – November 3, 2017

Tona Wilson is a Hudson Valley-based artist whose practice spans drawing, artists' books, and video. In the late 1990s she worked as a Spanish interpreter in New York State's courts, prisons and jails. These paths converged when she came to WSW to produce Stories Behind Bars, a quartet of books telling the stories of immigrants in prisons, jails, and immigration detention centers. Tona has since returned to WSW to teach silkscreen in the Hands-on Art program and produce a new artist's book, Dress Code Strictly Enforced.

Karina Gomez
Breakup: Etchings, mezzotints, and books from Fairbanks
September 12 – 30, 2017

Karina Gomez is a visual artist residing in Fairbanks, AK. Her etchings, mezzotints and collages capture peculiarities of place, time and life in Fairbanks. Karinna earned her MFA from the University of Alaska Fairbanks in 2014 and has since participated in residencies at Anderson Ranch Arts Center in Snowmass Village, CO and at Galleri Christensen in Kjellerfjord, Norway. She has received several awards including a Fulbright Grant to Iceland and a Rasmuson Foundation Individual Artist Award.

Sheila Nakitende
Tropika
September 12 – 30, 2017

Sheila Nakitende was a WSW Parent Grant resident. Her practice focuses on projects that contribute to the well-being of urban communities especially women in Uganda. She explores mixed media along with waste paper with which she draws, glues, twists and weaves. This experimenting is a portrayal of her surroundings and reaction to her experiences. She is also interested in how the creative industry can address challenges of protecting the environment and harness nature for materials to make art.

Louise Strawbridge
Seeing in the Dark: handmade paper and hand-dyed indigo
July 7 – August 27, 2017

Louise Strawbridge uses a wide range of materials and textures to explore the possibilities of disturbing qualities in the commonplace. In her work, mystery is not to be solved but valued and explored. She received a M.A. in Literature from The University of Chicago in 1971 and taught English for many years. Making art became her full time occupation when she moved to London in 1998. She has lived in Philadelphia since 2003.

Tatana Kellner
Please exit, the doors are closing
July – August, 2017

Tatana Kellner uses installation, photography, drawing and artist's books to comment on contemporary culture. Her work has been featured in over 25 solo exhibitions, most recently at the CEPA Gallery, Kentler International Drawing Space, the Everson Museum, and SUNY Art Museum in Albany. She has been awarded residencies at The MacDowell Colony, Banff Centre for the Arts, Visual Studies Workshop, Saltonstall Art Colony, Millay Colony, the Virginia Center for the Creative Arts, Artpark, Blue Mountain Center, Jentel, and Fundación Valparaiso, Hessisches Landes Museum in Darmstadt, Germany, and The Ragdale Foundation.

SUBSCRIBE TO NEWS

Artist Opportunity Calendar

Artists' Books

Support WSW

DONATE TO WSW